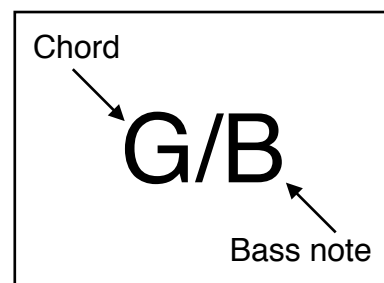


# Open Chords - Slash Chords

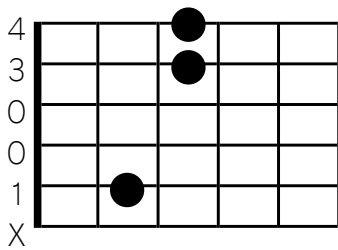
When a chord's bass note is not the root, you've got a **slash chord**, which is notated by listing the chord's name with a slash, followed the bass note.

**Root** - The root note is the note the chord is built from. For example, the root of the chord D minor is the note D. The root of E<sup>b</sup>maj7<sup>(#11)</sup> is the note E<sup>b</sup>.

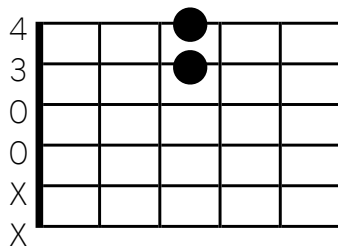
**Bass** - This is the lowest note heard. The lowest pitch you are playing in a chord is the bass note.



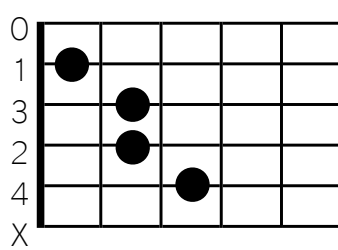
G/B



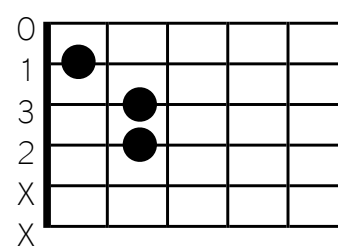
G/D



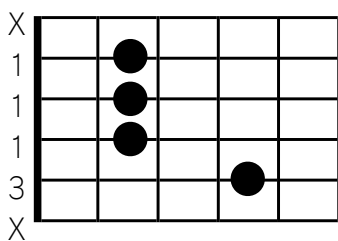
Am/C



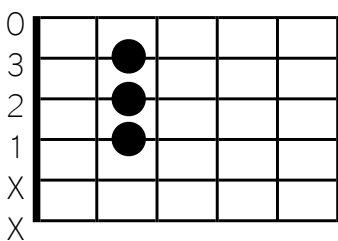
Am/E



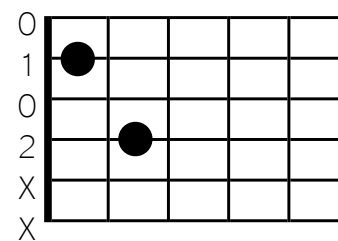
A/C#



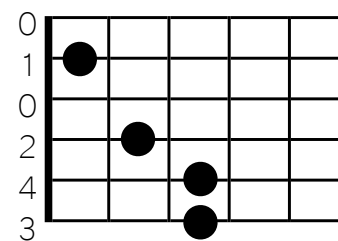
A/E



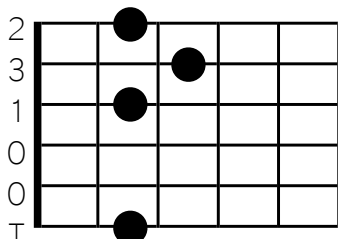
C/E



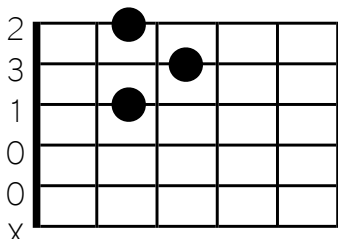
C/G



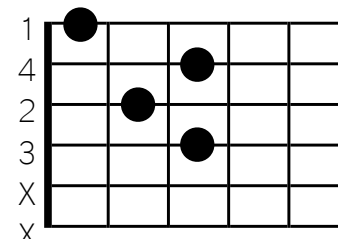
D/F#



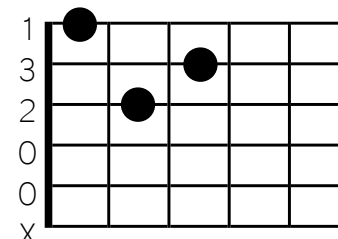
D/A



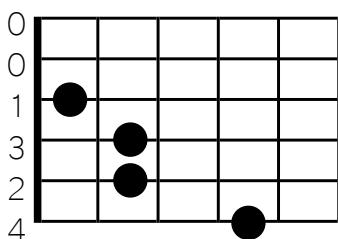
Dm/F



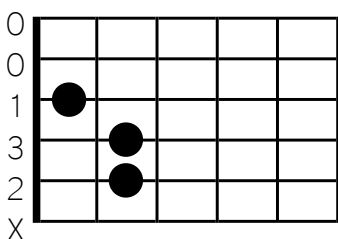
Dm/A



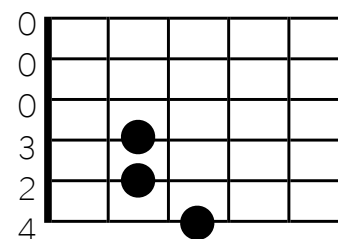
E/G#



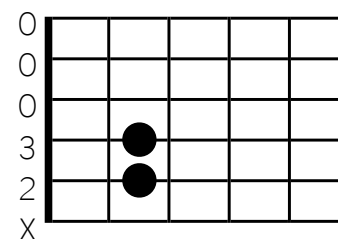
E/B



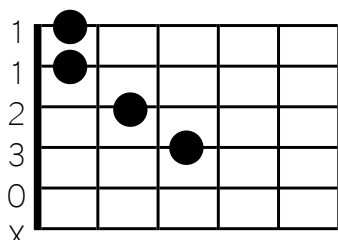
Em/G



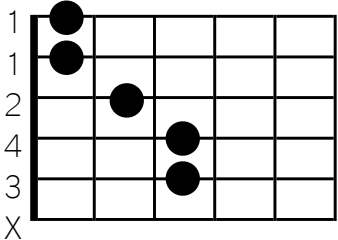
Em/B



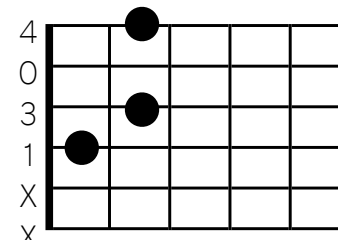
F/A



F/C



B7/D#



B7/F#

